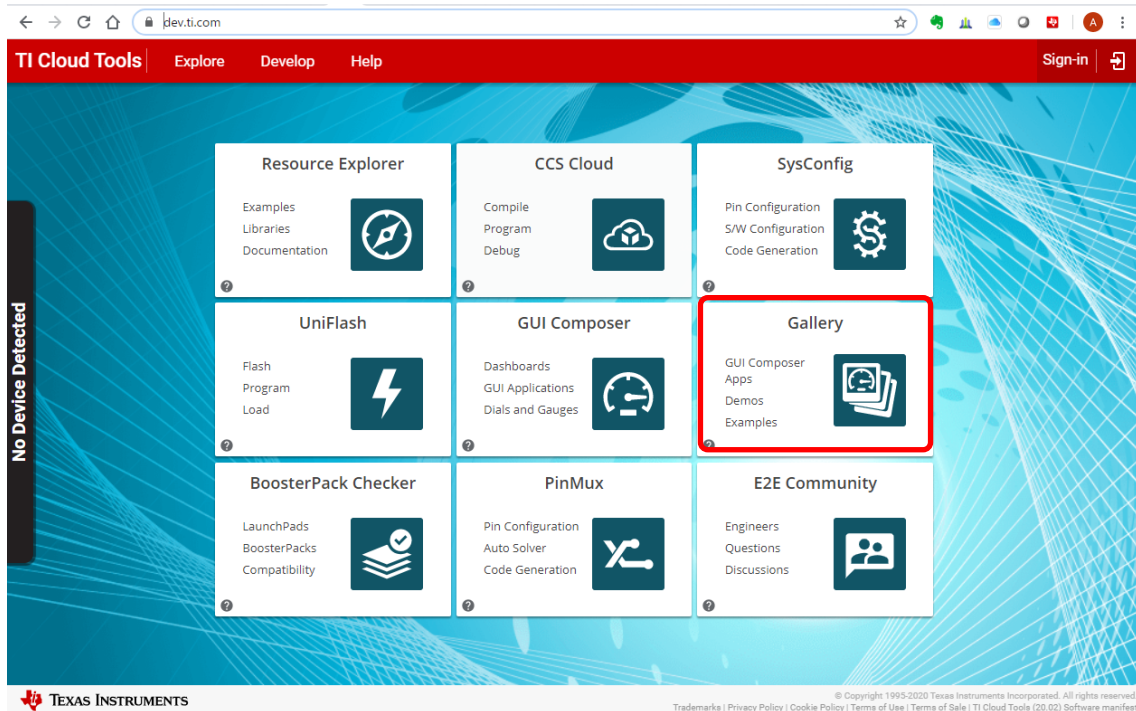
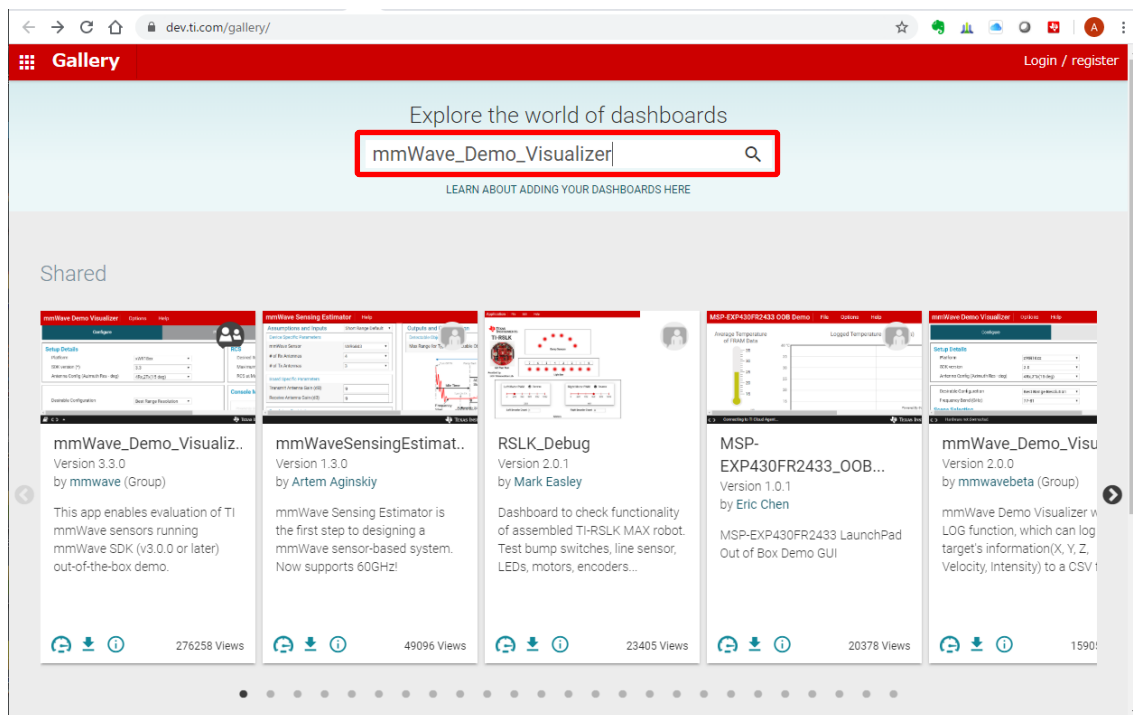


# 79GHz レーダー Visualizer の使い方

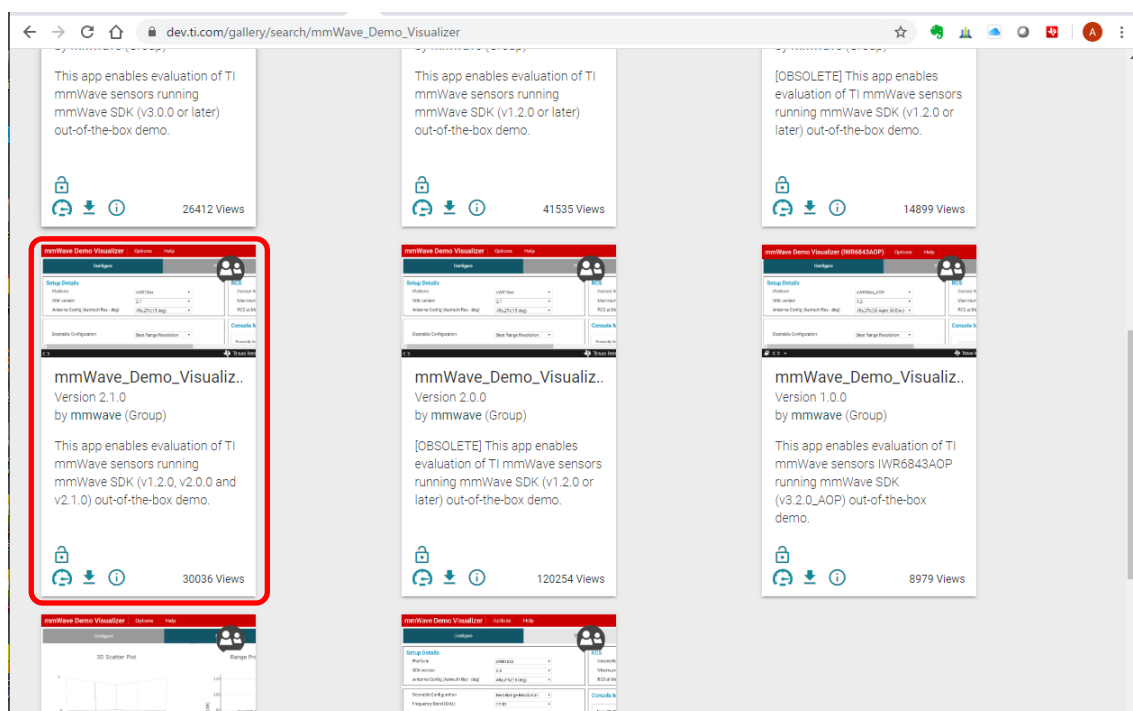
1. レーダーに電源を接続。USB ケーブルで PC を接続します。
2. ブラウザで、dev.ti.com を開き、Gallery を選択



### 3. mmWave\_Demo\_Visualizer を検索



### 4. 検索結果から、mmWave\_Demo\_Visualizer Version 2.1.0 を選択 バージョンが違くと動きません



## 5. COM Port を設定

Option から、Serial Port を選択。

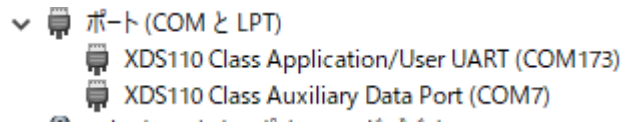
The screenshot shows the 'mmWave Demo Visualizer' web application. The browser address bar indicates the URL is `dev.ti.com/gallery/view/mmwave/mmWave_Demo_Visualizer/ver/2.1.0/`. The application has a red header bar with 'mmWave Demo Visualizer' and navigation tabs for 'Options' and 'Help'. Below the header, there's a 'Serial Port ...' button and a 'Configure Port and Baud Rate' link. The main interface is divided into several sections:

- Setup Details:** Includes dropdowns for Platform (xWR16xx), SDK version (2.1), and Antenna Config (4Rx,2Tx(15 deg)).
- RCS:** Includes input fields for Desired Radar Cross Section (sq. m) (0.5), Maximum Range for desired RCS (m) (35.82), and RCS at Max Unambiguous Range (sq. m) (0.002011).
- Desirable Configuration:** Includes a dropdown for Best Range Resolution and a dropdown for Frequency Band (GHz) (77-81).
- Scene Selection:** Includes sliders and input fields for Frame Rate (fps) (10), Range Resolution (m) (0.044), Maximum Unambiguous Range (m) (9.02), Maximum Radial Velocity (m/s) (1), and Radial Velocity Resolution (m/s) (0.13).
- Plot Selection:** Includes checkboxes for Scatter Plot, Range Profile, Noise Profile, Range Azimuth Heat Map, Range Doppler Heat Map, and Statistics.

At the bottom, there are three buttons: 'SEND CONFIG TO MMWAVE DEVICE', 'SAVE CONFIG TO PC', and 'RESET SELECTION'. A 'Console Messages' section is also visible on the right side of the interface.

## 6. Serial Port の設定

デバイスマネージャーで COM 番号を確認する。



Serial Port Configuration に COM 番号を設定

CFG\_port にデバイスマネージャーで確認した XDS110 Class Application/User UART の COM 番号を設定

DATA\_port にデバイスマネージャーで確認した XDS110 Class Auxiliary Data Port の COM 番号を設定し OK を選択。

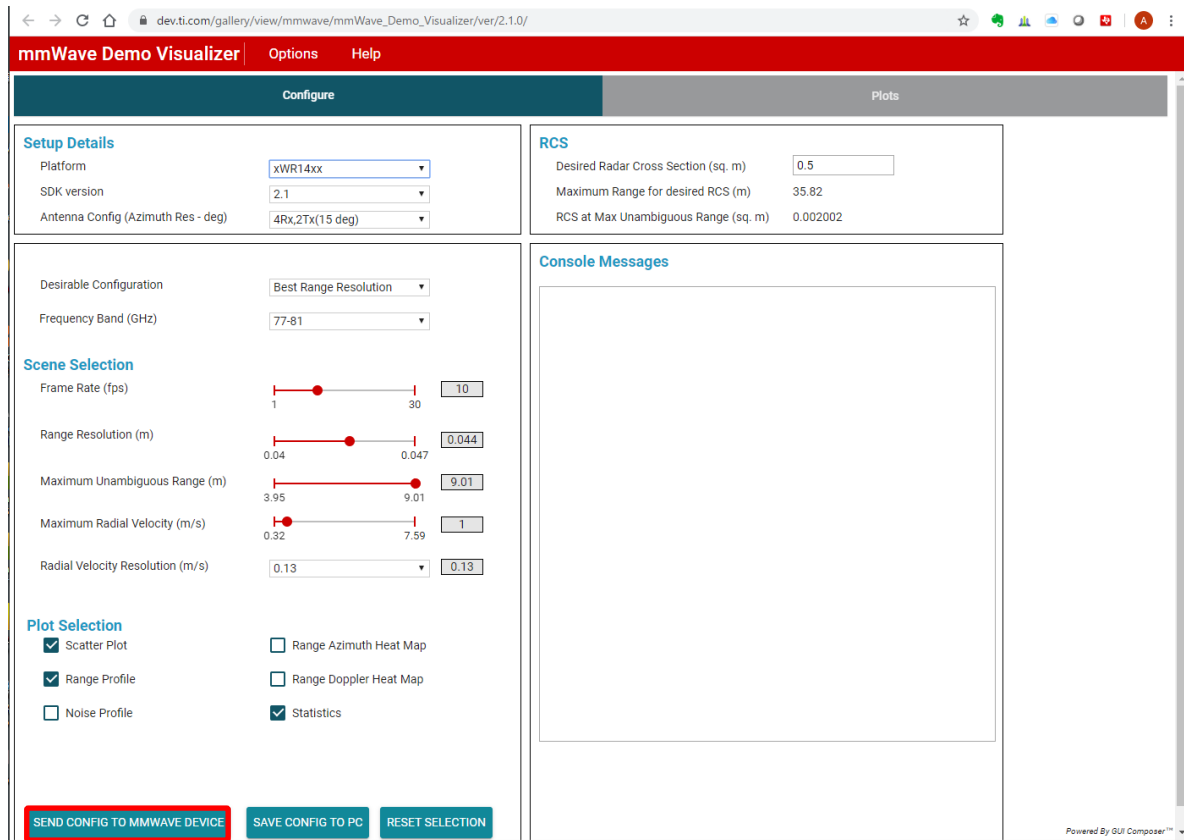
### Serial Port Configuration

CFG_port	DATA_port
Ports: COM173(Texas Instruments Incorporated) ▼	COM7(Texas Instruments Incorporated) ▼
Baud Rates: 115200 (recommended) ▼	921600 (recommended) ▼
<div>REFRESH</div> <div>OKCANCEL</div>	

## 7. Platform の選択

## 8. 設定の送信

SEND CONFIG TO MMWAVE DEVICE ボタンを押下



## 9. Console Messagesを確認

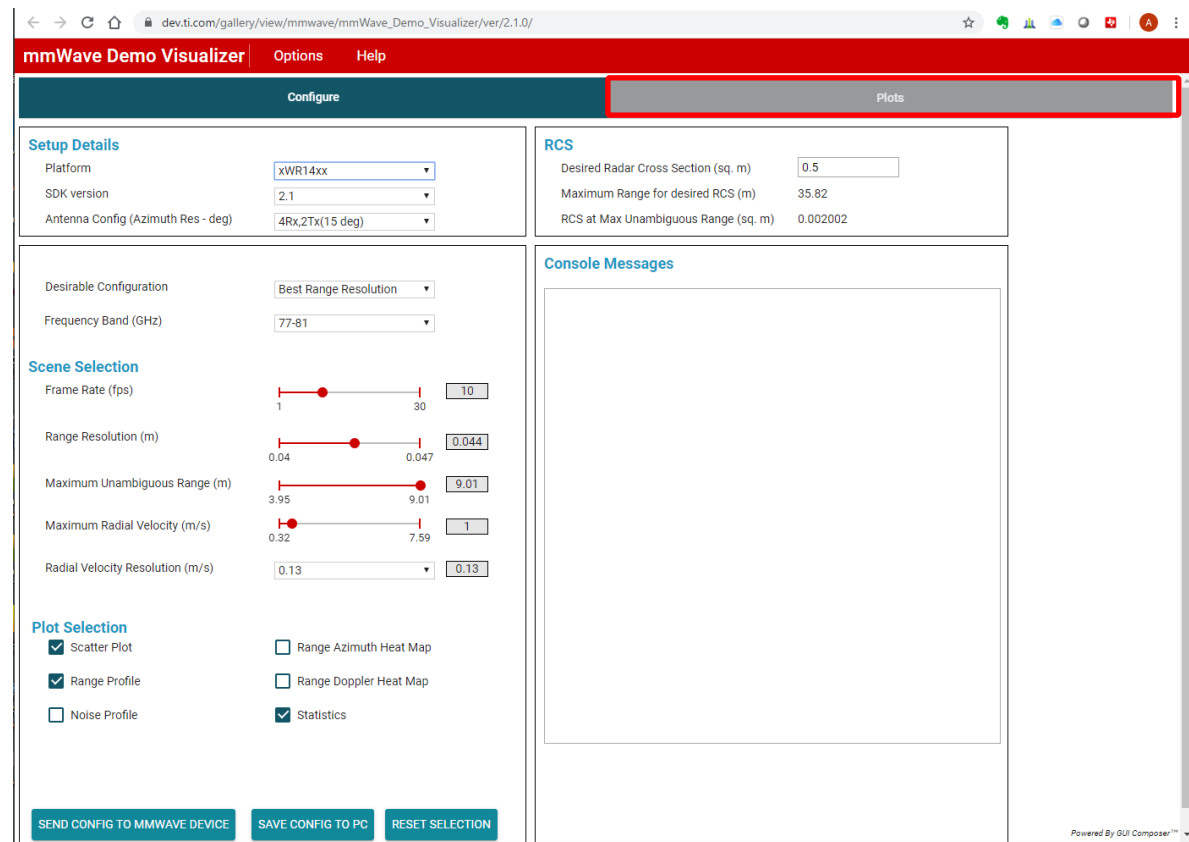
正常に設定された場合、Console Messages に通信メッセージが表示されます。  
最後まで Done 表示が出ることを確認します。

### Console Messages

```
mmwDemo:>/guiMonitor 1 1 0 0 0 1
Done
mmwDemo:>/cFarCfg 0 2 8 4 3 0 1280
Done
mmwDemo:>/peakGrouping 1 1 1 1 229
Done
mmwDemo:>/multiObjBeamForming 1 0.5
Done
mmwDemo:>/clutterRemoval 0
Done
mmwDemo:>/calibDcRangeSig 0 -5 8 256
Done
mmwDemo:>/compRangeBiasAndRxChanPhase 0.0 1 0 1 0 1 0 1 0 1 0 1 0 1 0
Done
mmwDemo:>/measureRangeBiasAndRxChanPhase 0 1.5 0.2
Done
mmwDemo:>/CQRxSatMonitor 0 3 5 123 0
Done
mmwDemo:>/CQSigImMonitor 0 119 4
Done
mmwDemo:>/analogMonitor 1 1
Done
mmwDemo:>/sensorStart
Debug: Init Calibration Status = 0x7fe
Done
```

## 10. データの表示

Plots ボタンを押下



## 11. データの表示

